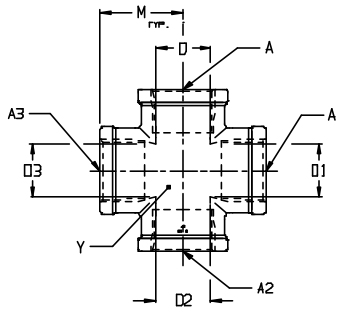


**3950F: FNPTF PIPE CROSS**

MATERIAL: FORGED BRASS  
 ASTM: B-124  
 TYPE: CA-377  
 TEMP RANGE: -65° - 250° F



PART NO.	A NPTF	A1 NPTF	A2 NPTF	A3 NPTF	M	D	D1	D2	D3	Y	Working Pressure
3950F-2	1/8-27	1/8-27	1/8-27	1/8-27	.56	.312	.312	.312	.312	.50	1906
3950F-4	1/4-18	1/4-18	1/4-18	1/4-18	.72	.406	.406	.406	.406	.69	1656
3950F-6	3/8-18	3/8-18	3/8-18	3/8-18	.81	.531	.531	.531	.531	.81	1280
3950F-8	1/2-14	1/2-14	1/2-14	1/2-14	1.00	.687	.687	.687	.687	1.00	1282
3950F-12	3/4-14	3/4-14	3/4-14	3/4-14	1.16	.906	.906	.906	.906	1.25	1289



Air-Way Manufacturing Co.  
 Hydraulic Fittings and Accessories

